



Name Stripper Guide Pins (Headed)
Model 25STPH / 25STOH
Page 107



Name Stripper Guide Pins (Straight)
Model 25STPN / 25STON
Page 108



Name Stripper Guide Pins (Detachable)
Model 25STGR / 25STOR / 25STPW
Page 109 - 110



Name Stripper Guide Bush (Press-Fit)
Model 25SPBA / 25SPBH
Page 110



Name Stripper Guide Bushes (Adhesive)
Model 25SGTA / 25SGTB
Page 111



Name Stripper Guide Bushes (Adhesive)
Model 25SGSB / 25SGHB
Page 111



Name Oil Free™ Stripper Guide Bushes (Press-Fit)
Model 25SGBC / 25SGHC
Page 112



Name Oil Free™ Stripper Guide Bushes (Press-Fit)
Model 25SGCC / 25SGFC
Page 112

ตารางการเลือกสตริปเปอร์ไกด์ | Stripper Guide selecting chart

Stripper Guide			Stripper Bush		
Guide Type	Model	Page	Bush Type	Model	Page
Headed Type	Plain	P. 107	Press-Fit	Oil Groove	P. 110
	Oil Groove			Oil Groove	
Straight Type	Plain	P. 108	Adhesive	Copper Alloy + Oil Groove	P. 111
	Oil Groove			Oil Free	
Removable Type	Plain	P. 109		Copper Alloy + Oil Free	P. 112
	Oil Groove				
2Side-Tapped Removable Type	Plain	P. 110			

การติดตั้งสตริปเปอร์ไกด์บุช | Stripper Guide Bush installation

Fitting Type		Clearance of guide & bush Before installation	Clearance of guide & bush After installation
Press-Fit	Straight	10 μ ~ 20 μ	2 μ ~ 17 μ
	Flange	5 μ ~ 15 μ	2 μ ~ 14 μ
Adhesive (Loctite No.638)	Straight	2 μ ~ 12 μ	2 μ ~ 12 μ
	Flange	2 μ ~ 12 μ	2 μ ~ 12 μ

สตริปเปอร์ไกด์ และ บุช

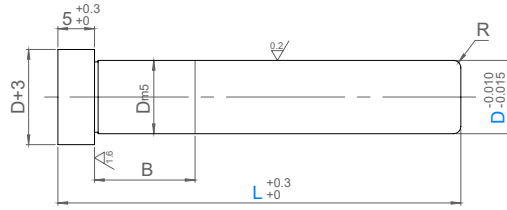
Stripper Guide Pins (Headed Type) - สตริปเปอร์ไกด์พิน (แบบมีป่า)



ไกด์แบบเรียบ
Plain guide

Model: 25STPH

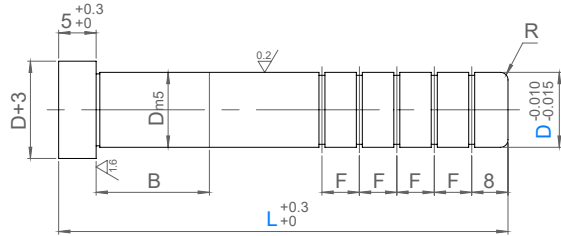
(M) SUJ2 58HRC-



ไกด์มีร่องน้ำมัน
Oil-Grooves guide

Model: 25STOH

(M) SUJ2 58HRC-



L	40+	50+	70+	80+	90+	120+	160+	180+
No. Grooves	2	3	4	5	6	6	7	8
F	8	8	8	8	8	10	10	10

ORDER EXAMPLE Model D - L
25STPH16-100

Model	D m5		L												R	B
25STPH	8	+0.012 +0.006	40	50	60	70	80								1.0	10
	10		40	50	60	70	80	90	100							13
25STOH	13	+0.015 +0.007	40	50	60	70	80	90	100	110	120			1.5	16	
	16			50	60	70	80	90	100	110	120	130	140		20	
	20		+0.017 +0.008			60	70	80	90	100	110	120	130	140	2.0	25
25					70	80	90	100	110	120	130	140	28			

การปรับแต่งเสริม | Options

OPTION EXAMPLE Model D - LC - (Others)
25STPH16-LC95-BC15

Options	Code	Spec.	Options	Code	Spec.											
	LC	STPH 20 ≤ LC ≤ Lmax STOH 40 ≤ LC ≤ Lmax 0.5mm increment *If LC shorter than standard L then BC is required		GC	Taper at the tip <table border="1"> <thead> <tr> <th>D</th> <th>Y</th> </tr> </thead> <tbody> <tr><td>8</td><td rowspan="2">3</td></tr> <tr><td>10</td></tr> <tr><td>13</td><td rowspan="3">5</td></tr> <tr><td>16</td></tr> <tr><td>20</td></tr> <tr><td>25</td></tr> </tbody> </table>	D	Y	8	3	10	13	5	16	20	25	
D	Y															
8	3															
10																
13	5															
16																
20																
25																
	BC	0 ≤ BC ≤ Dx2 1mm increment		TKC	+0.3 T 0 => +0.02 T 0											
	TC	2 ≤ TC < 5 0.1mm increment *L will be shorter by 5-TC if order with LC. L=LC		RC	Change R at the tip <table border="1"> <thead> <tr> <th>D</th> <th>RC</th> </tr> </thead> <tbody> <tr><td>8</td><td rowspan="2">1.5, 2.0</td></tr> <tr><td>10</td></tr> <tr><td>13</td><td rowspan="2">2.0, 2.5</td></tr> <tr><td>16</td></tr> <tr><td>20</td><td rowspan="2">2.5, 3.0</td></tr> <tr><td>25</td></tr> </tbody> </table>	D	RC	8	1.5, 2.0	10	13	2.0, 2.5	16	20	2.5, 3.0	25
D	RC															
8	1.5, 2.0															
10																
13	2.0, 2.5															
16																
20	2.5, 3.0															
25																

STRIPPER GUIDES & BUSHES

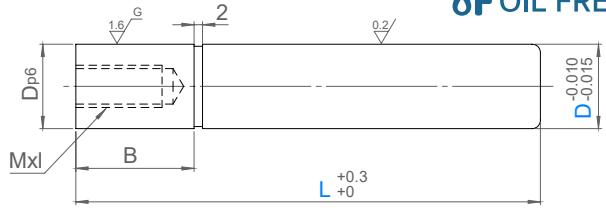
Stripper Guide Pins (Straight Type) - สตรีปเปอร์ไกด์พิน (แบบตรง)



ไกด์แบบเรียบ
Plain guide

Model: 25STPN

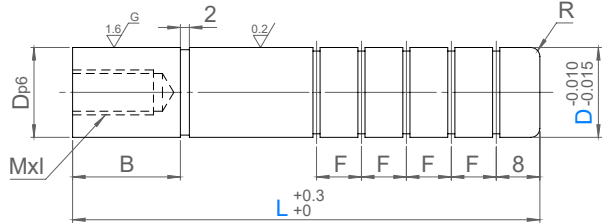
M SUJ2 58HRC-



ไกด์มีร่องน้ำมัน
Oil-Grooves guide

Model: 25STON

M SUJ2 58HRC-



L	40+	50+	70+	80+	90+	120+	160+	180+
No. Grooves	2	3	4	5	6	6	7	8
F	8	8	8	8	8	10	10	10

ORDER EXAMPLE Model D - L
25STPN16-100

Model	D p6		L												R	B	M x I
25STPN	8	+0.024 +0.015	40	50	60	70	80							1.0	10	M5x12 P0.8	
	10		40	50	60	70	80	90	100						13		
25STON	13	+0.029 +0.018	40	50	60	70	80	90	100	110	120			1.5	16	M6x15 P1.0	
	16			50	60	70	80	90	100	110	120				20		
	20	+0.035 +0.022			60	70	80	90	100	110	120	130	140	2.0	25	M8x20 P1.25	
	25					70	80	90	100	110	120	130	140		28		

การปรับแต่งเสริม | Options

OPTION EXAMPLE Model D - LC - (Others)
25STPN16-LC95-BC15

Options	Code	Spec.	Options	Code	Spec.															
	LC	STPN $20 \leq LC \leq L_{max}$ STON $40 \leq LC \leq L_{max}$ 0.5mm increment *If LC shorter than standard L then BC is required *If $LC \leq 25$ then Tapped Hole may go through another side		DKC	Change Dp6 to Dm5															
		<table border="1"> <thead> <tr> <th>D</th> <th>Lmax</th> <th>D</th> <th>Lmax</th> </tr> </thead> <tbody> <tr> <td>8</td> <td>120</td> <td>16</td> <td>200</td> </tr> <tr> <td>10</td> <td>150</td> <td>20</td> <td>200</td> </tr> <tr> <td>13</td> <td>180</td> <td>25</td> <td>200</td> </tr> </tbody> </table>	D	Lmax	D	Lmax	8	120	16	200	10	150	20	200	13	180	25	200	GC	Taper at the tip
D			Lmax	D	Lmax															
8	120	16	200																	
10	150	20	200																	
13	180	25	200																	
	<table border="1"> <thead> <tr> <th>D</th> <th>RC</th> </tr> </thead> <tbody> <tr> <td>8</td> <td>1.5, 2.0</td> </tr> <tr> <td>10</td> <td></td> </tr> <tr> <td>13</td> <td>2.0, 2.5</td> </tr> <tr> <td>16</td> <td></td> </tr> <tr> <td>20</td> <td>2.5, 3.0</td> </tr> <tr> <td>25</td> <td></td> </tr> </tbody> </table>	D	RC	8	1.5, 2.0	10		13	2.0, 2.5	16		20	2.5, 3.0	25		RC	Change R at the tip			
D	RC																			
8	1.5, 2.0																			
10																				
13	2.0, 2.5																			
16																				
20	2.5, 3.0																			
25																				
	BC	$0 \leq BC \leq D \times 2$ 1mm increment *If BC=0 then 2mm slot will not exist		TGC	Tapped End will be polish, the perpendicularity is 0.01															

สตริปเปอร์ไกด์ และ บุช

Stripper Guide Pins (Removable Type) - สตริปเปอร์ไกด์พิน (แบบถอดได้)

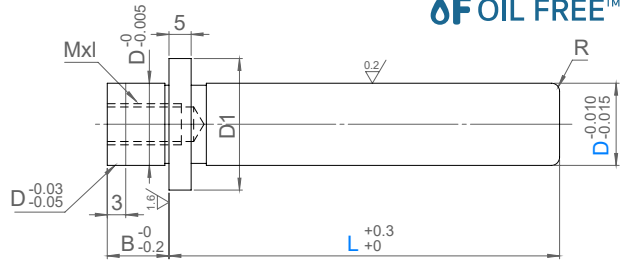


Stripper G&B

ไกด์แบบเรียบ
Plain guide

Model: 25STGR

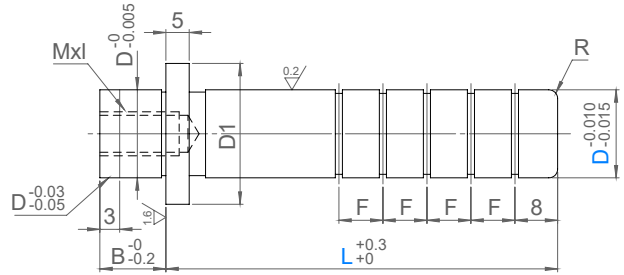
(M) SUJ2 58HRC-



ไกด์มีร่องน้ำมัน
Oil-Grooves guide

Model: 25STOR

(M) SUJ2 58HRC-



L	40+	50+	70+	80+	90+	120+
No. Grooves	2	3	4	5	6	6
F	8	8	8	8	8	10

ORDER Model D - L
EXAMPLE 25STGR16-100

Model	D	L										R	B	D1	M x I		
25STGR	8	30	40	50	60	70						1.0	8	13	M5x12 P0.8		
			30	40	50	60	70	80								16	
25STOR	13		40	50	60	70	80	90	100			1.5	10	20	M6x15 P1.0		
			40	50	60	70	80	90	100	110	120						23
				50	60	70	80	90	100	110	120					2.0	27
			60	70	80	90	100	110	120			16	32				

การปรับแต่งเสริม | Options

OPTION Model D - LC - (Others)
EXAMPLE 25STGR16-LC95-GC

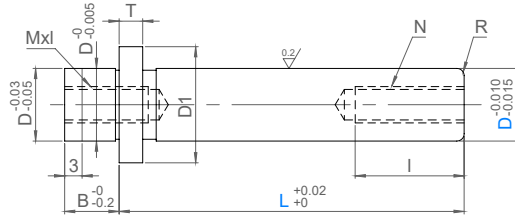
Options	Code	Spec.	Options	Code	Spec.																								
	LC	$30 \leq LC \leq L_{max}$ 0.5mm increment <table border="1"> <thead> <tr> <th>D</th> <th>Lmax</th> </tr> </thead> <tbody> <tr><td>8</td><td>80</td></tr> <tr><td>10</td><td>100</td></tr> <tr><td>13</td><td>120</td></tr> <tr><td>16</td><td>140</td></tr> <tr><td>20</td><td>140</td></tr> <tr><td>25</td><td>140</td></tr> </tbody> </table>	D	Lmax	8	80	10	100	13	120	16	140	20	140	25	140		GC	Taper at the tip <table border="1"> <thead> <tr> <th>D</th> <th>Y</th> </tr> </thead> <tbody> <tr><td>8</td><td rowspan="3">3</td></tr> <tr><td>10</td></tr> <tr><td>13</td></tr> <tr><td>16</td><td rowspan="3">5</td></tr> <tr><td>20</td></tr> <tr><td>25</td></tr> </tbody> </table>	D	Y	8	3	10	13	16	5	20	25
D	Lmax																												
8	80																												
10	100																												
13	120																												
16	140																												
20	140																												
25	140																												
D	Y																												
8	3																												
10																													
13																													
16	5																												
20																													
25																													
	BC	$5 \leq BC < B$ 1mm increment *Tapped hole will be shorter by B-BC		RC	Change R at the tip <table border="1"> <thead> <tr> <th>D</th> <th>RC</th> </tr> </thead> <tbody> <tr><td>8</td><td rowspan="2">1.5 . 2.0</td></tr> <tr><td>10</td></tr> <tr><td>13</td><td rowspan="2">2.0 . 2.5</td></tr> <tr><td>16</td></tr> <tr><td>20</td><td rowspan="2">2.5 . 3.0</td></tr> <tr><td>25</td></tr> </tbody> </table>	D	RC	8	1.5 . 2.0	10	13	2.0 . 2.5	16	20	2.5 . 3.0	25													
D	RC																												
8	1.5 . 2.0																												
10																													
13	2.0 . 2.5																												
16																													
20	2.5 . 3.0																												
25																													

STRIPPER GUIDES & BUSHES

Tapped Stripper Guide Pins (Removable Type) - สตรีปเปอร์ไกด์พิน มีรูตัด่าปเกลียว (แบบถอดได้)



Model: 25STPW



ORDER EXAMPLE Model D - L
25STPW20-110 **M** SUJ2 58HRC-

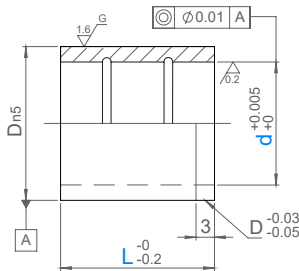
Model	D	L 5mm increment	R	T	B	D1	I	N	M x I
25STPW	8	25 - 70	1.0	3	8	12	8 - 13	M4 P0.7	M4x12 P0.7
	10					14			
	13	30 - 75	1.5	5	10	17	10 - 15	M5 P0.8	M5x12 P0.8
	16					23		M6 P1.0	M6x15 P1.0
	20	60 - 120	2.0			13	16 - 21	M8 P1.25	M8x20 P1.25
	25					16			

การปรับแต่งเสริม | Options

OPTION EXAMPLE Model D - LC - BC
25STPW10-LC54-BC6

Options	Code	Spec.	Options	Code	Spec.
	LC	For D = 8-13, 25 ≤ LC < L For D = 16-25, Lmin - 5 ≤ LC < L 0.5mm increment		BC	5 ≤ BC < B 1mm increment *Tapped hole will be shorter by B-BC

Stripper Guide Bushes (Press-Fit) - สตรีปเปอร์ไกด์บุช (แบบสวมอัด)

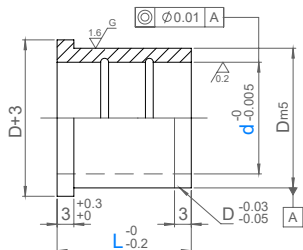


M SUJ2 58HRC-

ORDER EXAMPLE Model d - L
25SPBA16-25

Model	d	L						D n5		
25SPBA	8	10	13	16	20		12	+0.020 +0.012		
	10	10	13	16	20	25	14			
	13		13	16	20	25	18	+0.024 +0.015		
	16			16	20	25	30		22	
	20				20	25	30		35	25
	25					25	30		35	32

Flange Stripper Guide Bushes (Press-Fit) - สตรีปเปอร์ไกด์บุชมีป่า (แบบสวมอัด)



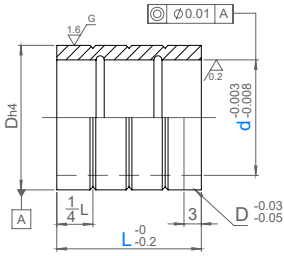
M SUJ2 58HRC-

ORDER EXAMPLE Model d - L
25SPBH16-25

Model	d	L						D m5			
25SPBH	8	10	13	16	20		12	+0.015 +0.007			
	10	10	13	16	20	22	25		14		
	13		13	16	20	22	25	30	35	18	
	16			13	16	20	22	25	30	35	22
	20				16	20	22	25	30	35	25
	25					20	22	25	30	35	32

สตริปปเปอร์ไกด์ และ บุษ

Stripper Guide Bushes (Adhesive) - สตริปปเปอร์ไกด์บุช (แบบใช้กาว)

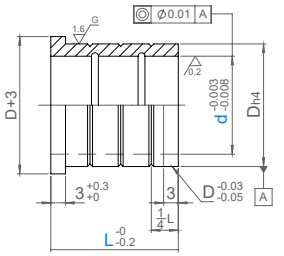


Model	d		L							D h4	
25SGTA	8	10	13	16	20					12	0 -0.005
	10	10	13	16	20	22	25			14	
	13		13	16	20	22	25	30	35	18	0 -0.006
	16		13	16	20	22	25	30	35	22	
	20			16	20	22	25	30	35	25	
	25				20	22	25	30	35	32	0 -0.007

M SUJ2 58HRC-

ORDER EXAMPLE Model d - L
25SGTA16-25

Flange Stripper Guide Bushes (Adhesive) - สตริปปเปอร์ไกด์บุชมีปาก (แบบใช้กาว)

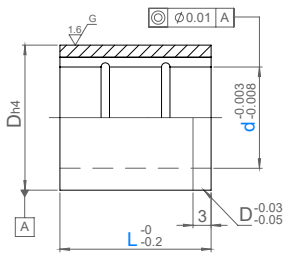
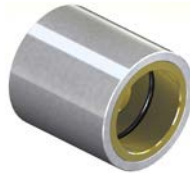


Model	d		L							D h4	
25SGTB	8	10	13	16	20					12	0 -0.005
	10	10	13	16	20	22	25			14	
	13		13	16	20	22	25	30	35	18	0 -0.006
	16		13	16	20	22	25	30	35	22	
	20			16	20	22	25	30	35	25	
	25				20	22	25	30	35	32	0 -0.007

M SUJ2 58HRC-

ORDER EXAMPLE Model d - L
25SGTB16-25

Copper Alloy Guide Bushes (Adhesive) - สตริปปเปอร์ไกด์บุชทองเหลือง (แบบใช้กาว)

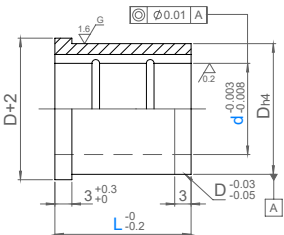


Model	d		L							D h4	
25SGSB	10	10	13	16	20	22	25			16	0 -0.005
	13		13	16	20	22	25	30		20	
	16			16	20	22	25	30	35	24	0 -0.006
	20			16	20	22	25	30	35	28	
	25				20	22	25	30	35	34	

M SUJ2 + Copper Alloy
45HRC

ORDER EXAMPLE Model d - L
25SGSB16-25

Flange Copper Alloy Guide Bushes (Adhesive) - สตริปปเปอร์ไกด์บุชทองเหลืองมีปาก (แบบใช้กาว)



Model	d		L							D h4	
25SGHB	10	10	13	16	20	22	25			16	0 -0.005
	13		13	16	20	22	25	30		20	
	16			16	20	22	25	30	35	24	0 -0.006
	20			16	20	22	25	30	35	28	
	25				20	22	25	30	35	34	

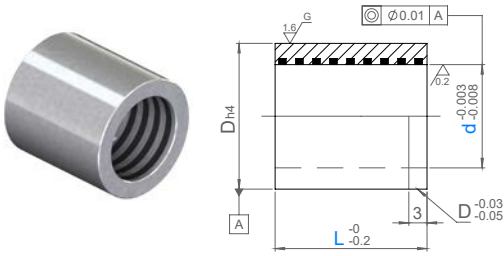
M SUJ2 + Copper Alloy
45HRC

ORDER EXAMPLE Model d - L
25SGHB16-25

STRIPPER GUIDES & BUSHES

Oil Free Guide Bushes (Adhesive) - ออยฟรี สตรีปเปอร์ไกด์บุช (แบบใช้กาว)

FOIL FREE™



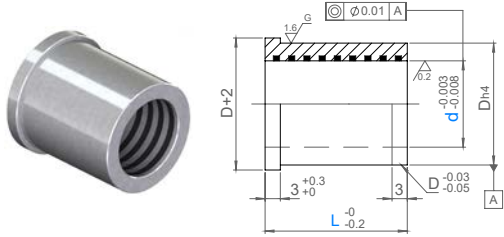
Model	d		L								D h4	
	8	10	13	16	20						13	0 -0.005
25SGBC	10	10	13	16	20	22	25				16	
	13		13	16	20	22	25	30			20	
	16		13	16	20	22	25	30	35	24	0 -0.006	
	20			16	20	22	25	30	35	28		
	25				20	22	25	30	35	34	0 -0.007	

M FC250
Oil Free™ Solid Lubricant

ORDER EXAMPLE Model d - L
25SGBC16-25

Flange Oil Free Guide Bushes (Adhesive) - ออยฟรี สตรีปเปอร์ไกด์บุชมีขา (แบบใช้กาว)

FOIL FREE™



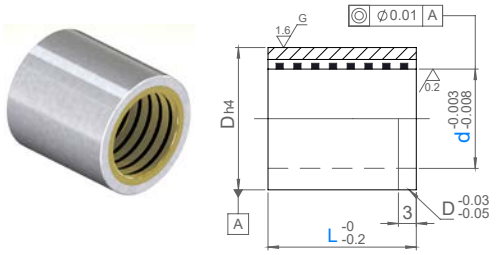
Model	d		L								D h4	
	8	10	13	16	20						13	0 -0.005
25SGHC	10	10	13	16	20	22	25				16	
	13		13	16	20	22	25	30			20	
	16		13	16	20	22	25	30	35	24	0 -0.006	
	20			16	20	22	25	30	35	28		
	25				20	22	25	30	35	34	0 -0.007	

M FC250
Oil Free™ Solid Lubricant

ORDER EXAMPLE Model d - L
25SGHC16-25

Oil Free Copper Alloy (Adhesive) - ออยฟรี ไกด์บุชทองเหลือง (แบบใช้กาว)

FOIL FREE™



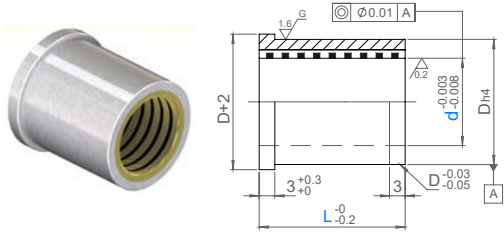
Model	d		L								D h4	
	10	10	13	16	20	22	25				16	0 -0.005
25SGCC	13		13	16	20	22	25	30			20	
	16			16	20	22	25	30	35	24	0 -0.006	
	20			16	20	22	25	30	35	28		
	25				20	22	25	30	35	34	0 -0.007	

M SUJ2 + Copper Alloy
Oil Free™ Solid Lubricant
45HRC

ORDER EXAMPLE Model d - L
25SGCC16-25

Flange Oil Free Copper Alloy (Adhesive) - ออยฟรี ไกด์บุชทองเหลืองมีขา (แบบใช้กาว)

FOIL FREE™



Model	d		L								D h4	
	10	10	13	16	20	22	25				16	0 -0.005
25SGFC	13		13	16	20	22	25	30			20	
	16			16	20	22	25	30	35	24	0 -0.006	
	20			16	20	22	25	30	35	28		
	25				20	22	25	30	35	34	0 -0.007	

M SUJ2 + Copper Alloy
Oil Free™ Solid Lubricant
45HRC

ORDER EXAMPLE Model d - L
25SGFC16-25