



# BIGSTONE BANDSAWS

Manufacturer of Quality Metal Cutting Bandsaws

Made in Taiwan

SINCE 1990



**SUN RISE**  
technologies

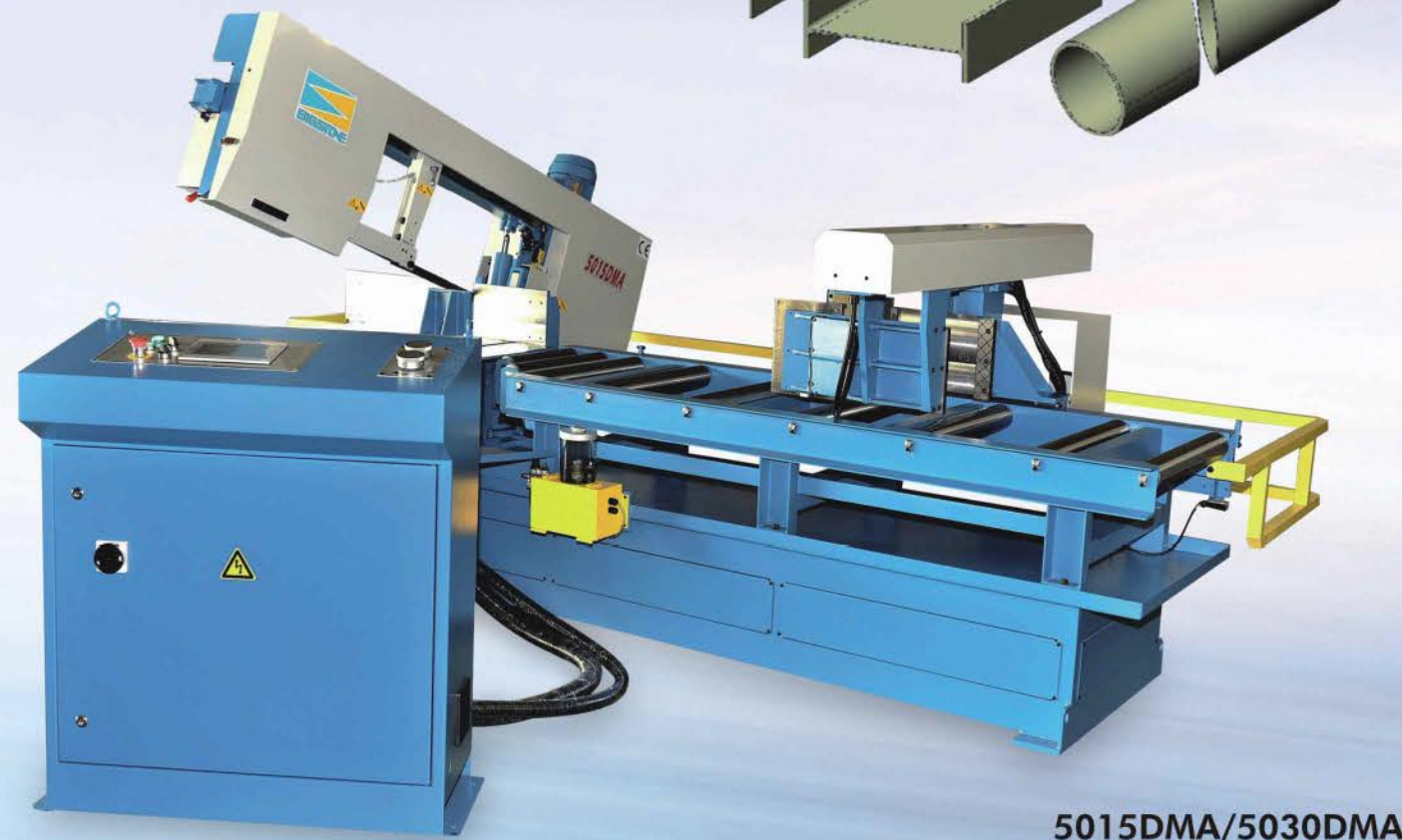
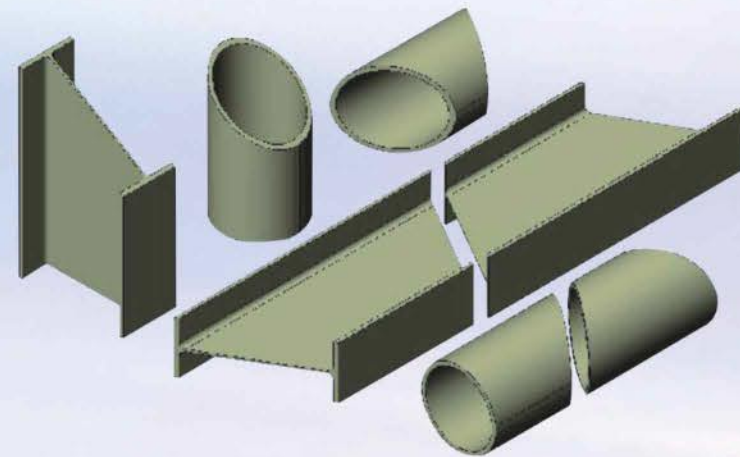
บริษัท ซันไรส์ เทคโนโลยี จำกัด  
969 หมู่ 5 ต.แพรงษา ต.แพรงษาใหม่  
อ.เมืองสมุทรปราการ จ.สมุทรปราการ 10280  
Tel : 662-324-3184-89  
Fax : 662-324-3190, 662-324-3103  
E-Mail : sale@sunrise.gr.com

# CNC Double Miter Cutting Bandsaws

CNC Fully automatic feeding and mitering bandsaws for cutting beams, pipes and solids.

## Model: 500DMA/ 5015DMA/ 5030DMA

1. 7" touch panel CNC control with inverter blade speed drive.
2. For frequent change of straight and miter cuts stepless from +30° to -45° on both directions.
3. Programming of cutting lengths, angles and number of pieces.
4. The CNC controller can be programmed offline on a desk top computer.
5. The material feeder with linear guideways; precision rack and pinion, powered by servo motor. (5015DMA/5030DMA)
6. Automatic movement of vices in conjunction with automatic miter positioning accuracy of  $\pm 0.1^\circ$ .
7. Full automatic cutting cycle.
8. Mist coolant system.
9. 500DMA with hydraulic feed vice; 5015DMA/5030DMA with servo feeder.



5015DMA/5030DMA



500DMA

### Standard equipment

- Inverter blade speed drive
- Mist lubrication
- Laser liner
- Working light

### Optional equipment

- Hydraulic blade tension
- 2M Roller table
- 3M Roller table
- 3M Powered roller table
- Auto-chip conveyor

MODEL		500DMA	5015DMA / 5030DMA
Cutting Capacity (mm)	● 90°	325	
	■ 90°	320x500 (HxW)	
	■ 45° Left	320x350	
	■ 30° Left	320x210	
	■ 45° Right	320x350	
Motors	Saw Blade	2.25KW	
	Hydraulic	0.75KW	
Blade Size	4755x34x1.1		
Blade Speed (M/min)	25-90		
Single Feed Stroke (mm)	600	1500 / 2500 (servo feed)	
Working Height (mm)	650		
Dimensions (mm)	Length	2860	4100 / 4800
	Width	2280	2280
	Height	1810	1810
Net Weight (Approx.) Kg	2300	2900 / 3200	

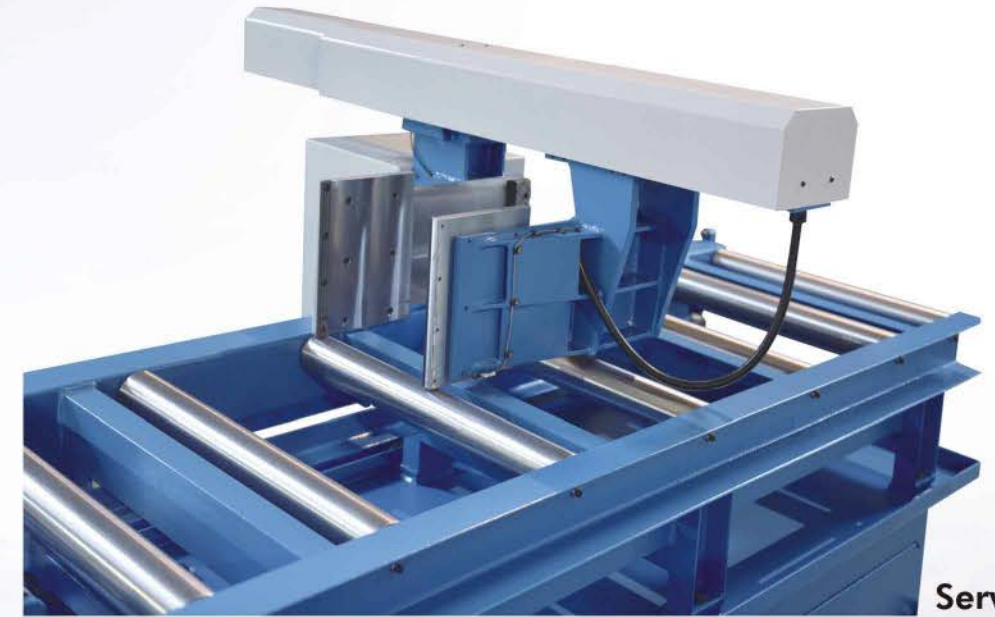
# Column Type CNC Double Miter Cutting Bandsaws

## Model: 650DMA/ 705DMA/ 800DMA/ 1000DMA/ 1300DMA

1. Fully automatic twin column CNC feeding and mitering bandsaws for cutting beams, pipes and solids.
2. For cutting variable angle from 30° left to 45° (30°) right.
3. Twin columns with linear guideways for cutting more stable and accurately.
4. Inclination of the saw blade to reduce the initial blade impact when cutting beams and square tubes.
5. The CNC control allows setting and memorising 250 cutting programs, with different cutting lengths; quantities and angles.
6. The CNC controller can be programmed offline on a desk top computer.
7. The material feeder with linear guideway; precision rack and pinion, powered by servo motor with 2300mm feed stroke.
8. Automatic positioning of guide arm.
9. Mist coolant system to minimise any mess created when cutting. (Option)



650DMA



Servo feeder



CNC Controller

### Standard equipment

- Inverter blade speed drive
- Hydraulic blade tension
- Laser liner
- Working light
- Fluid coolant system

### Optional equipment

- 3M feeder extension unit
- Mist lubrication
- 3M Roller table
- 3M Powered roller table

MODEL		650DMA	705DMA	800DMA	1000DMA	1300DMA					
Cutting Capacity (mm) (H x W)	● 90°	450	450	600	650	760					
	■ 90°	440x650	440x700	550x800	650x1000	700x1300					
	■ R/L 45°	440x420	440x450	400x520	450x650	650x850					
	■ L 30°	340x270	440x270	400x340	450x420	650x550					
	■ R 30°	440x270	440x290	--	--	650x550					
Motors	Saw Blade	3.75 KW	3.75 KW	5.5 KW	7.5KW	10.0KW					
	Hydraulic	0.75 KW	0.75 KW	1.5 KW	2.2KW	2.2KW					
	Coolant	0.1 KW	0.1 KW	0.2 KW	0.2KW	0.2KW					
Blade Size (mm)		5400x41x1.3	5660x41x1.3	6740x41x1.3	7750x54x1.6	9300x67x1.6					
Blade Speed (M/min)		20-90									
Single Feed Stroke		2300mm									
Working Height (mm)		730		800		850					
Dimensions (mm)		Saw	Feeder	Saw	Feeder	Saw	Feeder	Saw	Feeder	Saw	Feeder
	Length	1550	3100	1600	3100	2000	3100	2000	3100	2300	3100
	Width	2900	2000	3000	2100	3500	2100	3800	2100	4350	2100
Height	2200	1500	2300	1500	2560	1800	2600	1800	2600	1800	
Net Weight (Approx.) Kg		3000	1900	3200	1900	5200	2500	5600	2500	7400	2700

# Column Type Semi-Auto Double Miter Cutting Bandsaws

**Model: CF-610DM/ CF-650DMS/ CF-705DMS/ CF-800DMS/ CF-1000DMS/ CF-1300DMS**

1. For cutting any angle from 45° (30°) left to 30° right.
2. NC/Manual miter positioning with digital readout. (Except 610DM)
3. The rotary center is at the intersection point of the saw blade and the fixed vice jaw.
4. Inclination of the saw blade to reduce the initial blade impact when cutting beams.
5. Columns with linear guideways.
6. Automatic positioning of guide arm. (Except 610DM)
7. Return of saw bow to starting cutting position or stop to bottom when cut of material. (Except 610DM)



**CF-650DMS/ CF-705DMS**



**CF-1000DMS/ CF-1300DMS**



**CF-610DM**



**CF-800DMS**

### Standard equipment

- Inverter blade speed drive
- Hydraulic blade tension
- Laser liner
- Vice pressure regulator
- Fluid coolant system

### Optional equipment

- Mist lubrication
- Hydraulic Top clamp
- Full height vice jaws
- Roller table
- Powered roller table
- Material Feed System

MODEL		CF-610DM	CF-650DMS	CF-705DMS	CF-800DMS	CF-1000DMS	CF-1300DMS
Cutting Capacity (mm)	● 90°	420	450	450	600	650	760
	■ 90°	400x600	440x650	440x700	550x800	650x1000	700x1300
	■ 45° Left	400x400	440x420	440x450	400x520	400x650	650x850
	■ 30°	400x225	340x270	440x270	400x340	400x420	650x550
	■ 45° Right	400x400	440x420	440x450	550x520	650x650	650x850
	■ 30° Right	—	440x270	440x290	--	--	650x550
Motors	Saw Blade	3.75KW	3.75KW	3.75KW	5.5KW	7.5KW	10KW
	Hydraulic	0.75KW	0.75 KW	0.75KW	1.5KW	2.2KW	2.2KW
	Coolant	0.1KW	0.1 KW	0.1KW	0.2KW	0.2KW	0.2KW
Blade Size		4870x34x1.1	5400x41 x1.3	5660x41x1.3	6740x41x1.3	7750x54x1.6	9300x67x1.6
Blade Speed (M/min)		20-90	20-90	20-90	20-90	20-90	20-90
Working Height (mm)		715	730	730	800	800	850
Dimensions (mm)	Length	1500	1550	1600	2000	2000	2300
	Width	2700	2900	3000	3500	3800	4350
	Height	2100	2200	2300	2560	2600	2600
Net Weight (Approx.) Kg		1750	2200	2500	5200	5600	7400

# Semi-Auto Miter Cutting Bandsaws

## Model: CF-350M/ CF-450M/ CF-535M

1. For cutting any angle from 90° to 45° (30°) left.
2. Saw bed is swivel type, the fixed vice stays at 90°, easily set angle.
3. Full stroke of hydraulic vice. (CF-535M)
4. Hydraulic vice facilitates operation.
5. Blade tension gauge for optimum cutting force.
6. Tungsten carbide roller guides.



CF-350M



CF-450M



CF-535M

### Standard equipment

- Tungsten carbide roller guides
- Hydraulic vice cylinder
- Saw blade (1 pc) and tools with box
- Fluid coolant system

### Optional equipment

- Inverter blade speed drive
- Laser liner
- 2M Roller table
- Hydraulic Top clamp

MODEL		CF-350M	CF-450M	CF-535M
Cutting Capacity (mm)	● 90°	280	330	350
	■ 90°	270x410	320x450	330x535
	■ 45° Left	220x250	320x300	350x370
	■ 30° Left	150x100	140x170	350x320
Motors	Saw Blade	1.5KW	2.25KW	2.25KW
	Hydraulic	0.2KW	0.2KW	0.4KW
	Coolant	0.1KW	0.1KW	0.1KW
Blade Size		3560x27x0.9	4115x34x1.1	4755x34x1.1
Blade Speed (M/min)		35,55,75,90	25,35,45,65,80	25,40,60,75,95
Working Height (mm)		650	620	750
Dimensions (mm)	Length	1100	1150	1250
	Width	1800	2150	2400
	Height	1550	1700	1750
Net Weight (Approx.) Kg		750	950	1150

# Automatic Miter Cutting Bandsaws

# Heavy Duty Material Feeding Systems

## Model: CF-350AM/ CF-530HBM

1. Independent feed bed and vice system to provide accurate feeding of packs or bent bars. (530HBM)
2. Full automatic cutting with hydraulic power roller feed vice. (350AM)
2. Easily set angle from 90° to 45° (30°) for miter cutting.
3. Simple blade tension device assures the correct tension for optimum cutting.
4. Motion sensor to shut down the saw should the blade break or slip.
5. The saw blade stops automatically upon finishing the preset number of cuts.
6. Inverter blade speed drive (530HBM)



CF-530HBM

CF-350AM

### Standard equipment

- Tungsten carbide roller guides
- Hydraulic vice cylinder
- Inverter blade speed drive (530HBM)
- Auto-chip conveyor (530HBM)
- Fluid coolant system

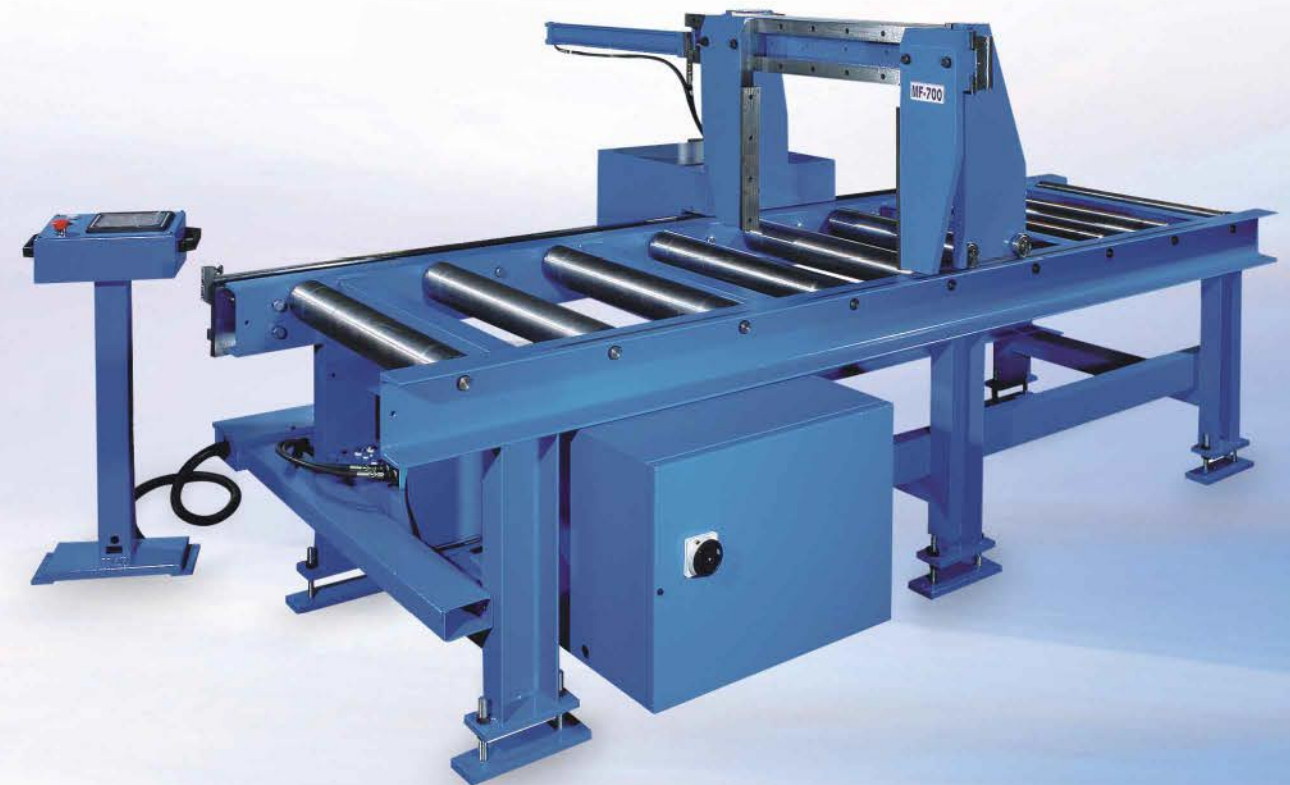
### Optional equipment

- Inverter blade speed drive (350AM)
- Nesting fixture
- Hydraulic blade tension (530HBM)
- Laser liner
- 2M Roller table
- Mist lubrication

MODEL		CF-350AM	CF-530HBM
Cutting Capacity (mm)	● 90°	280	330
	■ 90°	270x350	320x530
	■ 45° Left	220x220	300x350
	■ 30° Left	--	300x220
Motors	Saw Blade	1.5KW	3.75KW
	Hydraulic	0.2KW	0.75KW
	Coolant	0.1KW	0.1KW
Blade Size		3560x27x0.9	4570x34x1.1
Blade Speed (M/min)		35,55,75,90	25-95
Single Feed Stroke (mm)		—	500
Working Height (mm)		600	750
Packing Dimensions (mm)	Length	1200	2520
	Width	1900	2280
	Height	1600	1620
Net Weight (Approx.) Kg		850	1950

## Model: MF-600/ MF-700/ MF-1100/ MF-1400

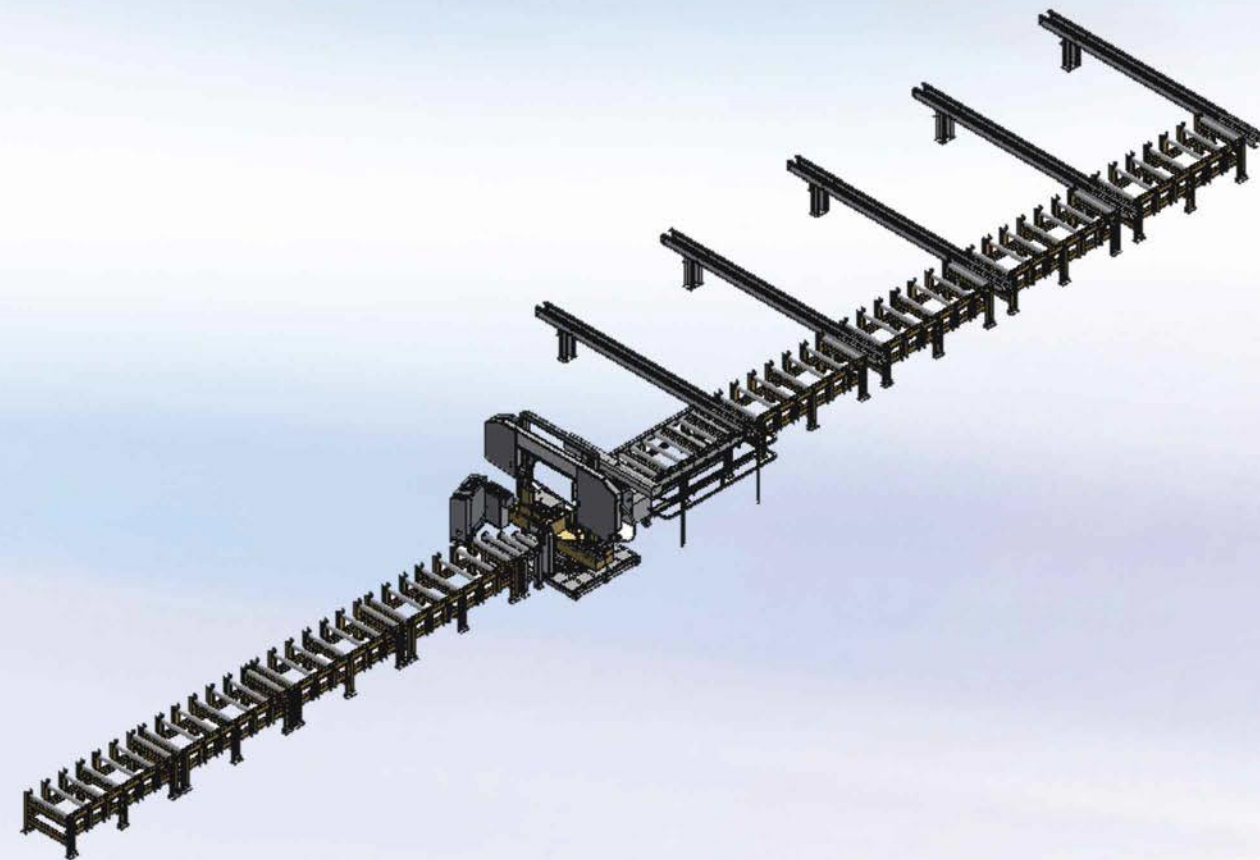
1. Quick precise measuring and positioning of the material.
2. Controlled by a PLC and servo motor.
3. Linear guideways with precision rack and pinion.
4. Heavy duty support rollers.
5. Full stroke hydraulic Vice.
6. Can be made to suit any machine Height
7. Roving control screen



1. Roller width: 600mm – 1400mm; Load up to 3500Kg
2. Accuracy: ± 0.2 mm/M
3. The standard 3000mm conveyor will give you 2400mm of feed stroke.
4. PLC with touch screen including actual position, Length required display.

# Material Handling System

The material handling system is comprised of Powered/Unpowered roller conveyors; Powered cross Transfer conveyors and Measuring Feeder or Length stop, providing a very cost-effective and customizable material handling system for structural steel profiles.



## 1. Powered/Unpowered 600-1400mm wide Roller Conveyors

2000mm; 3000mm and 5000mm length roller conveyors  
Electric drive motor with variable speed  
Chain-drive Clutch as an option (powered)

## 2. Electrically powered Cross Transfer Conveyors

Standard 6000mm, 4-arm or 5-arm systems  
Chain-driven transports  
Electric drive motor with variable speed

## 3. Measuring Feeder or length Stop

Servo motor drive with linear guideways; precision rack and pinion,  
Measuring Feeder feed stroke 2300mm and available up to 15M  
Measuring Length stop available up to 15M

# Column Type Semi-Auto Bandsaws

**Model: CF-260SW/ CF-360SW/ CF-460SW/ CF-600SW**

## Standard equipment

- Inverter blade speed drive
- Hydraulic blade tension
- Full stroke vice cylinder
- Fluid coolant system

## Optional equipment

- Motion detector
- Auto-chip conveyor
- Mist lubrication
- Vice pressure regulator
- 2M Roller table



**CF-260SW**

MODEL		CF-260SW	CF-360SW	CF-460SW	CF-600SW
Cutting Capacity (mm)	●	260	360	460	600
	■	260x280	360x360	460x460	600x600
Motors	Saw Blade	3.75KW	3.75KW	5.5KW	7.5KW
	Hydraulic	0.75KW	0.75KW	1.5KW	2.2KW
	Coolant	0.1KW	0.1KW	0.2KW	0.2KW
Blade Size		3660x34x1.1	4430x34x1.1	5545x41x1.3	6900x54x1.6
Blade Speed (M/min)		20-120	20-120	20-90	20-90
Working Height (mm)		660	660	700	600
Dimensions (mm)	Length	1100	1200	1700	1550
	Width	2300	2300	2970	3580
	Height	1600	1900	2225	2360
Net Weight (Approx.) Kg		1200	1600	2300	4000

# Column Type Full Automatic Bandsaws

**Model: CF-260AW/ CF-325BS(BSN)/ CF-360AW/ CF-460AW/ CF-600AW**

1. Independent feed bed and vice system to provide accurate feeding of packs or bent bars.
2. Both rear vice jaws are fitted with retract on the return stroke to allow feeding of deformed or bent materials and to prevent scoring of material.
3. The machine will process any length from 3-9999mm(NC) fully automatically and will shut down when the preset number is reached or material is finished.
4. The NC controller can be programmed offline on a desk top computer.
5. The vice jaws are fitted with full stroke cylinders to minimize maintenance.
6. Hydraulic blade tension holds proper tension for cuts and releases it upon shut-off which keeps blade life.
7. Hydraulically controlled cutting pressure sensing system to minimize cutting time and maximize blade life.
8. Motion detector to shut the machine down in case of blade breakage or jam.
9. Power drive blade brush to ensure that all chips are removed from the blade to maximize blade life.
10. Inverter blade speed drive.
11. Auto-chip conveyor.



**CF-260AW/  
CF-360AW**



**CF-460AW**



**Pack clamp system**



**CF-325BS/BSN**



**CF-600AW**



**NC Controller (Option)**

### Standard equipment

- Inverter blade speed drive
- Hydraulic blade tension
- Auto-Chip conveyor
- Pack clamp system (325BSN)
- Fluid coolant system

### Optional equipment

- Mist lubrication
- Nesting fixture
- Vice pressure regulator
- NC control
- 2M Roller table
- Pack clamp system

MODEL	CF-260AW	CF-325BS	CF-325BSN	CF-360AW	CF-460AW	CF-600AW	
Cutting Capacity (mm)	●	260	330	330	360	460	600
	■	260x280	330x370	330x370	360x360	460x460	600x600
Motors	Saw Blade	3.75KW	3.75KW	3.75KW	3.75KW	5.5KW	7.5KW
	Hydraulic	0.75KW	0.75KW	0.75KW	0.75KW	1.5KW	2.2KW
	Coolant	0.1KW	0.1KW	0.1KW	0.1KW	0.2KW	0.2KW
Blade Size	3660x34x1.1	4430x34x1.1		4430x34x1.1	5545x41x1.3	6900x54x1.6	
Blade Speed (M/min)	20-120	20-120		20-120	20-90	20-90	
Single Feed Stroke (mm)	400	600	450	500	500	500	
Working Height (mm)	660	700	700	660	700	600	
Packing Dimensions (mm)	Length	1750	1730	1730	1750	2120	2250
	Width	2300	2160	2160	2300	2970	3580
	Height	1650	1760	2100	1900	2225	2360
Net Weight (Approx.) Kg	1700	2300	2500	2200	3200	4800	